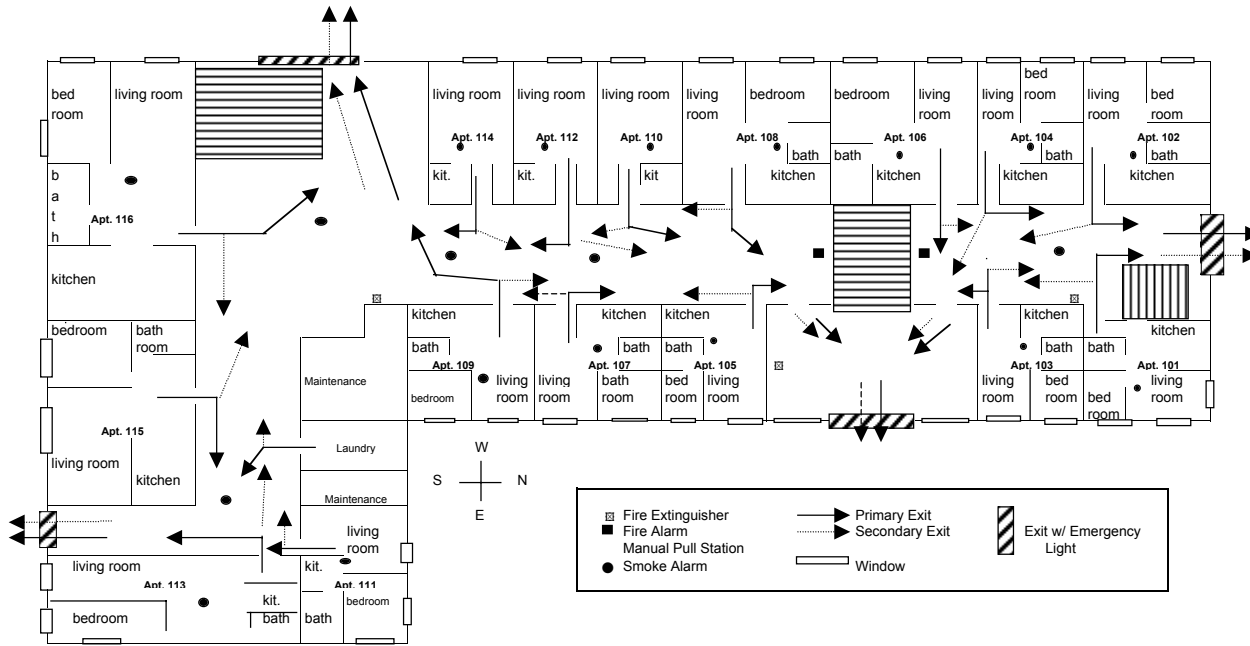


3602 Packers Avenue

First Floor



- Emergency Evacuation Plan**
Summary
 detector sounds, evacuate the building immediately
- Isolate the fire by closing doors
 - Notify other residents of fire
 - Evacuate the building
 - Call 911
- Evacuate the building using the primary escape route immediately
 - All residents will meet at the Stop-N-Go gas station
 - A head count should be complete by residents and communicated to the fire department upon their arrival.

Second Floor

